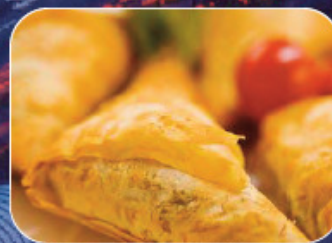
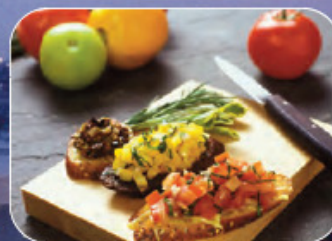




The  
**Baltimore**  
Convention Center

**Booth Catering Services  
Menu 2012**





# Welcome to the Baltimore Convention Center!

These points will ensure your success while hosting visitors in your booth.

- Centerplate is pleased to be the exclusive caterer for the Baltimore Convention Center who will handle all of your food, beverage and staffing needs. We are thrilled to have you as an exhibitor, and hope that we will meet and exceed your expectations.
- If your company manufactures, produces, or distributes food or beverages (**EXCLUDES ALCOHOL** – see guidelines) and your products are related to the nature of the show, you may provide samples for your guest's enjoyment in your booth on the trade show floor upon Centerplate's approval (*please see the guidelines for approved sample sizes and complete the sampling forms*). This includes requests for exhibitor amenities such as logo-bottled water, hard candies and sample products. **COMPLETED SAMPLING FORMS AND CERTIFICATE OF LIABILITY MUST BE RECEIVED BY THIS OFFICE 72 HOURS PRIOR TO EVENT DATE.**
- We must receive all show orders a minimum of seven days prior to the show to ensure we have the food and beverages you want as well as appropriate staffing to prepare, deliver, and service your account. All orders received within this seven day window will be subject to a 20% surcharge.
- Our catering services are provided on high quality disposable ware and are drop-off services (*unless otherwise noted*). We will be glad to coordinate specialty equipment\*, linens\*, flowers and amenities to optimize services in your booth (\*charges will be assessed for any damaged or lost item(s) and are the sole responsibility of the exhibitor).
- Client is responsible for supplying adequate space within their exhibition space, including bar and work space needed to provide contracted service(s).
- Electrical needs for food service, trash removal, tables and chairs are coordinated through your show's general contractor. Please make all arrangements for these services through them.
- All booth service orders are subject to a \$45 delivery fee.
- Orders totaling less than \$200.00 (*prior to the addition of labor, service charges and tax*) will have an additional fee of \$30.00 applied to the booth delivery charge.
- All prices are subject to service charges and sales tax. Cancellations of perishable products prior to 72 hours in advance of the show's start will receive a refund. Cancellation of services within 72 hours of the show's start will be subject to payment in full.
- All services must be paid in full prior to the show's start. We accept company checks, wire transfers, Visa, MasterCard, Discover and American Express in full pre-payment of your services. We will require a credit card on file for any additional services ordered during the show or incidentals.
- It is the responsibility of the exhibitor to ensure that all services ordered are in compliance with show regulations.
- Please call us at 410.649.7009, fax at 410.649.7043 or email [marsha.pratt@centerplate.com](mailto:marsha.pratt@centerplate.com) with your needs, so we may assist you.

*A 21% service charge and current sales tax will be added to all food, beverage and labor fees.*

# booth catering menu

Company: \_\_\_\_\_  
 Billing Address: \_\_\_\_\_  
 \_\_\_\_\_  
 City/State/Zip Code: \_\_\_\_\_  
 Phone: \_\_\_\_\_  
 Fax: \_\_\_\_\_  
 E-Mail: \_\_\_\_\_

Show Name: \_\_\_\_\_  
 Booth Name: \_\_\_\_\_  
 Booth #: \_\_\_\_\_  
 On-Site Contact: \_\_\_\_\_  
 Cell Phone: \_\_\_\_\_  
 Notes: \_\_\_\_\_

beverages	QTY	price
3-Gallons Coffee w/ Supplies		\$150
3-Gallons Decaf w/ Supplies		\$150
3-Gallons Hot Tea w/ Supplies		\$150
K-Cup Service (50 pods, machine & supplies)		
3-Gal. of Unsweetened Iced Tea OR Lemonade		\$120
12 pk Assorted Sodas		\$36
12 pk Assorted Bottled Juices		\$48
12 pk Individual Bottled Water		\$36
6 pk Red Bull (regular or sugar-free)		\$36
4 pk Five Hour Energy Shots		\$24
40-lb. of Ice		\$20
5-gallon Water Jug (each)		\$25
Water Cooler Unit (daily rental) <i>requires 100 volt, 15 amp electrical service</i>		\$60
am pastries	QTY	price
2-do Asst. Euro Breakfast Pastries		\$96
2-do Asst. Muffins w/ condiments		\$84
2-do Asst. Danish		\$96
2-do Asst. Croissants w/ condiments		\$96
2-do Asst. Bagels w/ condiments		\$72
6 pk Housemade Yogurt Parfaits		\$28.50
snacks	QTY	price
2-do Asst. Cookies		\$64
2-do Asst. Brownies		\$72
2-do Asst. Dessert Bars		\$100
Ind. Bags of Snacks (each)		\$2.50
5-lb. bowl of Trail Mix		\$90
5-lb. bowl of Pretzels		\$90
5-lb. bowl of Mixed Nuts		\$160
1-do Asst. Whole Fresh Fruit		\$24
2-do Asst. Granola Bars		\$72
2-do Asst. Candy Bars		\$72
5 lb. Bowl of Assorted Miniture Candies		\$160

lunch	QTY	price
<i>all boxed lunches come with choice of soda OR water</i>		
<b>Traditional Sandwich Boxed Lunch</b> <i>with chips, cookie &amp; beverage</i>		
Turkey	_____	\$20
Ham	_____	\$20
Grilled Vegetable	_____	\$20
<b>Gourmet Salad Boxed Lunch</b> <i>with chips, dessert du jour &amp; beverage</i>		
Grilled Chicken Caesar Salad	_____	\$25
Thai Beef Salad	_____	\$25
Tuna Nicoise Salad	_____	\$25
Vegetarian Mediterrean Salad	_____	\$25
<b>Pita Pocket Boxed Lunch</b> <i>with fresh pita, chips, cookie &amp; beverage</i>		
Curried Chicken Salad	_____	\$25
Albacore Tuna Salad	_____	\$25
Antipasto Salad (contains pork)	_____	\$25
Traditional Egg Salad	_____	\$25
Shrimp & Crab Salad	_____	\$28
<b>Gourmet Wrap Boxed Lunch</b> <i>with chips, pasta salad, dessert du jour &amp; beverage</i>		
Southwestern Roast Beef Wrap	_____	\$24
Cranberry Turkey Wrap	_____	\$24
Garden Vegetable Wrap	_____	\$24
<b>Beverage selection</b>		
Assorted Canned Soda	_____	inc. with lunch
Bottled Water	_____	inc. with lunch

Please complete the attached credit card authorization form for payment and include it with this form.

### IMPORTED INFORMATION

Centerplate is the exclusive caterer to the Baltimore Convention Center. All food, beverage and alcohol are to be served by Centerplate.

NO outside food or beverage is permitted, including logo'd bottled water and candies

100% payment is required at the time your order is placed. We accept American Express, MasterCard, Visa, Diner and Discover cards.

Each order is subject to a \$45.00 delivery fee per service, along with MD sales tax (6%; 9% alcohol) and a 21% service charge.

Prices are subject to change without notification.

Orders received within 7 days of the show will incur a late order fee of 20%.

Disposable service-ware is used for and/or provided for all booth catering orders and is a drop-off service only.

Client is responsible for all electrical requirements, as well as tables, linens, trash cans and trash removal in the booth.

For inquiries or to discuss additional options, please call (410) 649-7009

PLEASE FAX ORDER TO (410) 649-7043 or E-MAIL TO [marsha.pratt@centerplate.com](mailto:marsha.pratt@centerplate.com)



# edible incentives

## boardwalk snack

*based on 4 hours of service and includes:*

freshly popped kettlecorn made to order

Served plain, butter, sea salt, old bay, maple or white cheddar, along with napkins and bags

**\$650.00++ per order** (400 servings)

Includes Attendant for four hours of service (additional hours charged at \$45 per hour)

Popcorn Machine: dimensions: 3ft high, 2ft wide and 2ft deep

electrical requirements: 115 watts and 120 volts (client responsible to contact Edlen at 410.649.7321 for electrical services)

## baltimore feista

Housemade Tortilla Chips  
with crab salsa

or

Old Bay Kettle Chips  
with Hot Crab Fondue

or

Berger Cookies and  
Goetz Caramels

**\$1200.00++ per order** (200 servings)

## seafood martini

Jumbo lump crab and shrimp marinated in citrus vinaigrette;  
garnished with micro greens and fresh herbs

**\$1800.00++ per order** (100 servings in disposable martini glasses)

## “nut-thing” to it

Nuts made to order (400 four ounce bags), machine, bags and napkins

*Selection of Nuts*

Cinnamon Sugar Roasted  
Almonds **\$2600**

Cinnamon Sugar Roasted  
Pecans **\$2600**

Mixed (Almonds and Pecans)  
**\$2600**

Glazed Cashews  
**\$3200**

*Includes Attendant for four hours of service (additional hours charged at \$45 per hour)*

Power requirements: 208volt/30amps

## make your own trail mix

with housemade granola, honey roasted peanuts, banana chips, M&M's,  
cheddar goldfish, mini pretzels and dried fruit

**\$1000.00++ per order** (250 total servings)

*A 21% service charge and current sales tax will be added to all food, beverage and labor fees.*



Craveable Experiences. Raveable Results.™

ONE WEST PRATT STREET · BALTIMORE, MARYLAND 21201 · 410.649.7000 · [WWW.BCCENTER.ORG](http://WWW.BCCENTER.ORG)

# edible incentives

## parking for pretzels

hot jumbo soft pretzels  
served with classic yellow mustard and hot nacho cheese sauce

**\$290.00++ per order** (48 pretzels)

Rotating Pretzel Machine: dimensions: 3ft high, 2.5ft wide and 2.5ft deep  
electrical requirements: 115 watts and 120 volts (client responsible to contact Edlen at 410.649.7321 for electrical services)

## maryland meets mediterranean

warm Maryland crab dip, warm spinach and artichoke dip,  
cool baba ghanoush and tomato basil relish  
accompanied by flat breads, crostinis and fancy crackers

**\$600.00++ per order** (serves 50)

## cinema break

freshly popped popcorn  
assorted candies (*M&Ms, Swedish fish and Goetz caramels*)  
seasonal lemonade

**\$500.00++ per order** (serves 50)

## changing season

sliced seasonal fresh fruit and berries  
chef's selection of housemade desserts and assorted cookies  
seasonal lemonade OR apple cider  
freshly brewed coffee, decaffeinated coffee and hot tea

**\$1200.00++ per order** (serves 75)

## cool down

### Classic Ice Cream Novelties

*Chef's selection of ice cream sandwiches, strawberry, chocolate  
or almond éclair bars and ice cream cones*

**\$737.50++ per order** (serves 250)

Re-orders: \$275 (100 pieces)

### Premium Ice Cream Novelties

*Chef's selection of Häagen-Dazs, Ben & Jerry bars, cones and/or  
cups, chocolate chip cookie sandwich and nutty buddies*

**\$1175.00++ per order** (serves 100)

Re-orders: \$450 (100 pieces)

Ice Cream Cooler: dimensions: 9ft wide and 3.5ft deep

electrical requirements: 115 watts and 120 volts (client responsible to contact Edlen at 410.649.7321 for electrical services)

*A 21% service charge and current sales tax will be added to all food, beverage and labor fees.*



Craveable Experiences. Raveable Results.™

ONE WEST PRATT STREET · BALTIMORE, MARYLAND 21201 · 410.649.7000 · WWW.BCCENTER.ORG

# edible incentives

## fresh from the oven

*Includes cookie dough, an oven and supplies*

**Flavors:** Chocolate Chip, Oatmeal Raisin, Peanut Butter, White Chocolate Macadamia Nut

**\$1000.00++ per order** (250 servings)

Includes attendant for four hours of service (*additional hours charged at \$45 per hour*)

electrical requirements: 110 volts/20 amps (client responsible to contact Edlen at 410.649.7321 for electrical services)

## mousse tracks

**Parfait:** *Vanilla Yogurt Mousse layered with fruit and topped with housemade granola*

**Healthy:** *Cottage Cheese Mousse layered with pineapple and topped with toasted coconut*

**Cookies & Crème:** *Creamy Mousse layered with crushed oreos*

**Turtle:** *Chocolate Mousse layered with caramel sauce and pecans*

**Berries & Cream:** *Vanilla Mousse layered with chopped strawberries*

**Truffle:** *Dark Chocolate Mousse layered with raspberries*

**\$1200.00++ per order** (200 total servings)

Includes two mousse parfait selections, toppings, disposableware, napkins and

attendant for four hours of service (*additional hours charged at \$45 per hour*),

## chocolate lovers

chocolate dipped Oreo cookies, pretzel rods, strawberries and peanuts

double fudge brownies and chocolate chip cookies

served with milk, freshly brewed coffee, decaffeinated coffee and hot teas

**\$1800.00++ per order** (100 servings)

## s'mores break

Made to order with a Baltimore twist!

*butter cookies or graham crackers topped with a rich chocolate ganache and toasted marshmallow cream*

Includes Attendant for four hours of service (*additional hours charged at \$45 per hour*)

**\$1050.00++ per order** (100 servings)

## short stack

*build your own strawberry shortcake station to include:*

assorted berries, caramelized pineapple, petite sugar biscuits, pound cake,

vanilla whipped cream, ginger crème anglaise and chocolate shavings

served with freshly brewed coffee, decaffeinated coffee and hot teas

**\$550.00++ per order** (serves 50)

*A 21% service charge and current sales tax will be added to all food, beverage and labor fees.*



Craveable Experiences. Raveable Results.™

ONE WEST PRATT STREET · BALTIMORE, MARYLAND 21201 · 410.649.7000 · WWW.BCCENTER.ORG

# edible incentives

## imported and domestic cheese display

*Garnished with dried fruit, nuts and grapes, served with sliced baguettes and assorted crackers*

**\$187.50++ per order** (serves 25)

## display of sliced seasonal fruit and berries

**\$150.00++ per order** (serves 25)

## fresh market vegetable crudités

*with roasted red pepper dip and buttermilk ranch dip*

**\$100.00++ per order** (serves 25)

## platter of sandwiches

*On Chef's selection of breads; garnished with pickles*

**turkey & swiss**  
*with cranberry aioli*

**roast beef & cheddar**  
*with chipotle compote*

**grilled vegetables**  
*with roasted garlic hummus*

**\$225.00++ per order** (total of 25)

## platter of petite sandwiches

*Assorted sandwiches on silver dollar rolls*

**curried chicken salad**

**ham & brie**  
*with fruit chutney*

**roast beef**  
*with horseradish cream*

**traditional egg salad**

**\$350.00++ per order** (total of 100)

## antipasto

*Italian meats and cheeses, marinated vegetables, kalamata olives, artichoke hearts and focaccia bread*

**\$250.00++ per order** (serves 50)

## bruschetta and flat bread

*Served with extra virgin olive oil and specialty toppings to include:*

*roasted garlic hummus, herb roasted eggplant and tomato caponata, fresh olive tapenade and fresh tomato, basil & garlic relish*

**\$400.00++ per order** (serves 50)

## jumbo prawn

*Iced jumbo prawns with lemon wedges and cocktail sauce*

**\$300.00++ per order** (serves 25; 4 pieces pp)

*A 21% service charge and current sales tax will be added to all food, beverage and labor fees.*



Craveable Experiences. Raveable Results.™

ONE WEST PRATT STREET · BALTIMORE, MARYLAND 21201 · 410.649.7000 · WWW.BCCENTER.ORG

# benefitting beverages



## starbucks® gourmet coffee bar

*Starbucks Regular and Decaffeinated House Blend Coffee*

*Accompanied by Three Seasonal Flavored Syrups*

*Tazo Flavored Tea Bags with Honey, Lemon, Sugar and Sweet n Low*

**\$1425.00 per day** (service includes 225 servings)

*Includes Attendant for four hours of service (additional hours charged at \$45 per hour)*

*Additional Information:*

**Additional Starbucks Coffee or Tea @ \$180.00 per three gallon**

**Individually Wrapped Biscotti @ \$90.00 per three dozen**

## coming to your “ade”

*Housemade lemonade to quench your thirst*

*Mango, Strawberry, Lavender or Classic*

**\$250.00 per five gallons** (1 select per order)

## It's o-K

*Keurig single cup coffee maker brews a perfect cup of coffee, tea or hot chocolate at the touch of a button*

**\$50.00 per day rental**

**\$400.00** (serves 125 serving; choice of coffee selection or combo package)

*Includes 125 k-cups, biodegradable cups, condiments and water*

## smooth it out

*Frozen fruit smoothies blended to order and topped with whipped cream*

**Select One:** Berry, Banana, Peach, Mango or Pineapple

*Service includes attendant, beverages and condiments*

**\$1350.00 per day** (service includes 200 servings)

*Includes Attendant for four hours of service (additional hours charged at \$45 per hour)*

## best of both worlds

*A combination of a rich all natural milkshake topped with a fruit smoothie. Choose from one of the following:*

**Creamcicle:** Vanilla Milkshake and Orange Smoothie

**S & C:** Vanilla Milkshake and Strawberry Smoothie

**Truffle:** Chocolate Milkshake and Raspberry Smoothie

**Monkey:** Chocolate Milkshake and Banana Smoothie

**Tropical:** Coconut Milkshake with Pineapple Smoothie

*Service includes attendant, beverages and condiments*

**\$1350.00 per day** (service includes 200 servings)

*Includes Attendant for four hours of service (additional hours charged at \$45 per hour)*

*A 21% service charge and current sales tax will be added to all food, beverage and labor fees.*



Craveable Experiences. Raveable Results.  
ONE WEST PRATT STREET · BALTIMORE, MARYLAND 21201 · 410.649.7000 · WWW.BCCENTER.ORG

## cold hors d'oeuvres (per 100)

<b>ginger beef tenderloin</b> <i>with diakon, cilantro and poke sauce</i>	\$700
<b>classic bruschetta</b> <i>with tomato-basil relish</i>	\$300
<b>greek bruschetta</b> <i>with goat cheese, black olives tapenade and roasted peppers</i>	\$400
<b>boursin stuffed strawberry</b>	\$350
<b>parmesan crostini with charred baby tomato</b> <i>with fresh mozzarella and opal basil</i>	\$600
<b>brie canape</b> <i>with raspberry and honey glazed pecan</i>	\$600
<b>belgian endive cone</b> <i>with gorgonzola cheese mousse and caramelized pecans</i>	\$400
<b>maryland crab in mini bouchee</b> <i>with spicy herb remoulade</i>	\$700
<b>crab &amp; shrimp tartlet</b> <i>crab and shrimp salad with a hint of lemon zest in a petite savory tart shell</i>	\$700
<b>cajun shrimp</b> <i>with garlic aioli</i>	\$600
<b>ahi tuna tartare cones</b> <i>with diced cucumbers, chives, cilantro and soy in a petite savory cone; topped with wasabi-avocado creme fraiche</i>	\$700
<b>smoked salmon on crispy potatoes</b> <i>with caper berries</i>	\$600
<b>prosciutto wrapped melon</b>	\$500
<b>salami canape</b> <i>with olive garnish</i>	\$400
<b>curried chicken tart</b> <i>with seedless red grapes and fresh parsley</i>	\$500
<b>confit of duck</b> <i>with scallions and hoisin sauce on wonton chip</i>	\$500

## hot hors d'oeuvres (per 100)

<b>teriyaki chicken satay</b>	\$400
<b>buffalo chicken spring roll</b> <i>with bleu cheese dip</i>	\$400
<b>thai chicken</b> <i>skewered with sugar cane</i>	\$375
<b>peking duck ravioli</b> <i>served crispy coated with hoisin sauce</i>	\$400
<b>quince, almond and manchego cheese</b> <i>in phyllo</i>	\$350
<b>vegetarian samosa</b>	\$400
<b>roasted tomato &amp; eggplant crisp</b>	\$350
<b>edamame pot stickers</b> <i>with ginger soy dipping sauce</i>	\$350
<b>asian vegetable spring roll</b> <i>with sweet chili dipping sauce</i>	\$375
<b>beef wellington</b>	\$450
<b>ale braised beef</b> <i>in pastry</i>	\$400
<b>cheesesteak puff</b> <i>with chipotle dipping sauce</i>	\$400
<b>mini calzone</b> <i>with ham, salami, pepperoni and mozzarella</i>	\$300
<b>mac &amp; cheese poppers</b> <i>with ham</i>	\$300
<b>shrimp chopstick</b>	\$400
<b>lobster cobbler</b>	\$500
<b>mini maryland crab cakes</b> <i>with classic cocktail sauce</i>	\$700
<b>crab and mushroom star</b> <i>sweet crab and wild mushrooms with brie and truffle oil wrapped in phyllo dough</i>	\$475

A 21% service charge and current sales tax will be added to all food, beverage and labor fees.



Craveable Experiences. Raveable Results.™

ONE WEST PRATT STREET · BALTIMORE, MARYLAND 21201 · 410.649.7000 · WWW.BCCENTER.ORG

# bar services

State law prohibits bringing liquor into or out of the Baltimore Convention Center. Only Centerplate may provide alcoholic beverages within the Center. Additionally, a Centerplate bartender is required to serve all alcoholic beverages.

	hosted consumption bar	cash bar
Premium Liquors	8.00	9.50
Domestic Beer	6.00	7.00
Imported Beer	6.00	7.00
Non Alcoholic Beer	6.00	7.00
Microbrews	6.00	7.00
Premium Wine by the Glass	7.00	8.50
Soft Drinks	3.00	3.00
Mineral Waters	3.00	3.00
Bottled Juices	4.00	4.00

## alcohol by the bottle

**Domestic Beer** \$144.00  
 (24) 12 oz. bottles per case  
 Budweiser, Bud Lite, Miller Lite, Coors Light or O'Douls

**Imported or Microbrew Beer** \$144.00  
 (24) 12 oz. bottles per case  
 Heineken, Amstel Light, Sam Adams Boston Lager, Corona Extra, Baltimore's Heavy Seas

**Keg Beer**  
 Please call your Centerplate Sales Department for a complete selection, pricing and information

**Champagne**  
 Freixenet, Carta Nevada Brut \$30.00  
 Korbel, Brut \$50.00

**White Wine**  
 Mirassou Chardonnay \$37.00  
 Stone Cellars White Zinfandel \$30.00  
 Ecco Domani Pinot Grigio \$40.00  
 Boordy, Riesling \$40.00

**Red Wine**  
 Beringer, Stone Cellars Cabernet Sauvignon \$30.00  
 Pensfolds Koongua Hill, Shiraz \$33.00  
 Beringer, Stone Cellars Merlot \$30.00  
 Mirassou Pinot Noir \$37.00

Please note that Maryland Alcoholic Beverage Commission regulates alcoholic beverages and services. Centerplate, as licensee, is responsible for the administration of these regulations.

- Ⓞ No person under the age of 21 will be served alcoholic beverages.
- Ⓞ No alcoholic beverages may be brought onto the premises from outside sources.
- Ⓞ We reserve the right to refuse alcoholic beverage service to anyone who appears to be intoxicated or underage.
- Ⓞ No alcoholic beverage may be removed from the premises.

++Bartending: a minimum of one bartender is required for all specialty beverage services. Fee is \$150.00 per bartender with a four-hour minimum; each additional hour thereafter is \$45.00 per hour. Bars will be set-up based on number of beverages ordered.

A 21% service charge and current sales tax will be added to all food, beverage and labor fees.



Craveable Experiences. Raveable Results.™  
 ONE WEST PRATT STREET · BALTIMORE, MARYLAND 21201 · 410.649.7000 · WWW.BCCENTER.ORG

# specialty spirits

<p><b>Bloody Mary Station</b>  <i>With Smirnoff and Kettle One Vodkas          With a variety of Condiments and Garnishes</i></p>	<p><b>Major Mojitos</b>  <i>Classic Mojito, Peach, Purple Basil and Chocolate          made with classic Bacardi</i></p>
<p><b>Sweet Sangria</b>  <i>Add flair to your booth with splashes of sangria          Blended Chilled Red Sangria and White Sangria          accented with fresh fruit</i></p>	<p><b>Shaken Spiked Palmers</b>  <i>Firefly Flavored Tea Vodkas (sweet tea and mint tea)          mixed with Housemade Lemonade          (Unsweetened Non-Alcoholic Tea included)</i></p>

**\$1750.00++ per order** (200 total servings)

*Includes Bartender for four hours of service (additional hours charged at \$45 per hour)*

**Additional Drinks @ \$8.50 each**

# just chill station

add some fun with a frozen specialty drink

non-alcoholic beverages:

*Select from the following:*

Mudslide, Cappuccino, Strawberry-Banana, Peach,  
 Raspberry-Lemonade or Berry-Yogurt

\$5.50 per non-alcoholic beverage

**\$1350.00++ per order** (200 total servings)

**Additional Drinks @ \$6.50 each**

alcoholic beverages:

*Select from the following:*

Mudslide, Mango Margaritas, Pina Colada,  
 Strawberry Daiquiris or Hurricane

**\$1750.00++ per order** (200 total servings)

**Additional Drinks @ \$8.50 each**

(plus daily \$400.00+ machine rental – dimensions: 2' deep by 1' wide)

*Includes Attendant/Bartender for four hours of service (additional hours charged at \$45 per hour)*

Also available are a wide variety of Beers, Wines, Champagne, Cordials or Specialty Cocktails.

Please contact your sales manager for additional information.

*A 21% service charge and current sales tax will be added to all food, beverage and labor fees.*



Craveable Experiences. Raveable Results.™

ONE WEST PRATT STREET · BALTIMORE, MARYLAND 21201 · 410.649.7000 · [WWW.BCCENTER.ORG](http://WWW.BCCENTER.ORG)

# booth catering order form



**Company:** \_\_\_\_\_  
**Billing Address:** \_\_\_\_\_  
 \_\_\_\_\_  
 \_\_\_\_\_  
**Phone:** \_\_\_\_\_  
**Fax:** \_\_\_\_\_  
**E-Mail:** \_\_\_\_\_

**Show Name:** \_\_\_\_\_  
**Booth Name:** \_\_\_\_\_  
**Booth #:** \_\_\_\_\_  
**On-Site Contact:** \_\_\_\_\_  
**Cell Phone:** \_\_\_\_\_  
**Notes:** \_\_\_\_\_

Selection	Quantity	Price	Date(s)	Start Time	End Time
<b>boardwalk snack</b>		<b>\$650</b>			
<b>baltimore fiesta</b> circle one: tortilla / kettle / cookies		<b>\$1200</b>			
<b>seafood martini</b>		<b>\$1800</b>			
<b>"nut-thing" to it</b> circle one: almonds / pecans / mixed /cashews					
<b>make your own trail mix</b>		<b>\$1000</b>			
<b>parking for pretzels</b>		<b>\$290</b>			
<b>maryland meets mediterranean</b>		<b>\$600</b>			
<b>cinema break</b>		<b>\$500</b>			
<b>changing season</b>		<b>\$1200</b>			
<b>cool down</b> circle one: traditional / premium					
<b>fresh from the oven</b>		<b>\$1000</b>			
<b>mousse tracks</b>		<b>\$1200</b>			
<b>chocolate lovers</b>		<b>\$1800</b>			
<b>smares break</b>		<b>\$1050</b>			
<b>short stack</b>		<b>\$550</b>			

**IMPORTED INFORMATION**

Centerplate is the exclusive caterer to the Baltimore Convention Center. All food, beverage and alcohol are to be served by Centerplate.

NO outside food or beverage is permitted, including logo'd bottled water and candies

100% payment is required at the time your order is placed. We accept American Express, MasterCard, Visa, Diner and Discover cards.

Each order is subject to a \$45.00 delivery fee per service, along with MD sales tax (6%; 9% alcohol) and a 21% service charge.

Prices are subject to change without notification.

Orders received within 7 days of the show will incur a late order fee of 20%.

Disposable service-ware is used for and/or provided for all booth catering orders and is a drop-off service only.

Client is responsible for all electrical requirements, as well as tables, linens, trash cans and trash removal in the booth.

For inquiries or to discuss additional options, please call (410) 649-7009

PLEASE FAX ORDER, ALONG WITH CREDIT CARD AUTHORIZATION FORM TO (410) 649-7043 or E-MAIL TO [marsha.pratt@centerplate.com](mailto:marsha.pratt@centerplate.com)

# booth catering order form



**Company:** \_\_\_\_\_  
**Billing Address:** \_\_\_\_\_  
 \_\_\_\_\_  
 \_\_\_\_\_  
**Phone:** \_\_\_\_\_  
**Fax:** \_\_\_\_\_  
**E-Mail:** \_\_\_\_\_

**Show Name:** \_\_\_\_\_  
**Booth Name:** \_\_\_\_\_  
**Booth #:** \_\_\_\_\_  
**On-Site Contact:** \_\_\_\_\_  
**Cell Phone:** \_\_\_\_\_  
**Notes:** \_\_\_\_\_

Selection	Quantity	Price	Date(s)	Start Time	End Time
<b>cheese display</b>		\$187.50			
<b>fruit display</b>		\$150			
<b>crudités display</b>		\$100			
<b>sandwich platter</b>		\$225			
<b>petite sandwich platter</b>		\$350			
<b>antipasto display</b>		\$250			
<b>bruschetta &amp; flat breads</b>		\$400			
<b>jumbo prawn display</b>		\$300			
<b>Starbucks® coffee bar</b>		\$1425			
<b>individually wrapped biscotti</b>		\$90			
<b>It's o-K</b>		\$450			
<b>coming to your "ade"</b> <i>select:</i> classic, mango, strawberry or lavender		\$250			
<b>smooth it out</b> <i>select:</i> berry, banana, mango, peach or pineapple		\$1350			
<b>best of both worlds</b> <i>select:</i> creamcicle, truffle, s&c, monkey or tropical		\$1350			
<b>just chill – non alcoholic:</b> Selection(s): mudslide, cappuccino, strawberry-banana, peach, raspberry-lemonade or berry-yogurt		\$1250  <b>Add:</b> _____ <i>(\$6.50 each)</i>			

**IMPORTED INFORMATION**

Centerplate is the exclusive caterer to the Baltimore Convention Center. All food, beverage and alcohol are to be served by Centerplate. NO outside food or beverage is permitted, including logo'd bottled water and candies

100% payment is required at the time your order is placed. We accept American Express, MasterCard, Visa, Diner and Discover cards.

Each order is subject to a \$45.00 delivery fee per service, along with MD sales tax (6%; 9% alcohol) and a 21% service charge.

Prices are subject to change without notification.

Orders received within 7 days of the show will incur a late order fee of 20%.

Disposable service-ware is used for and/or provided for all booth catering orders and is a drop-off service only.

Client is responsible for all electrical requirements, as well as tables, linens, trash cans and trash removal in the booth.

For inquiries or to discuss additional options, please call (410) 649-7009

PLEASE FAX ORDER, ALONG WITH CREDIT CARD AUTHORIZATION FORM TO (410) 649-7043 or E-MAIL TO [marsha.pratt@centerplate.com](mailto:marsha.pratt@centerplate.com)

# reception/bar booth catering order form

<b>Company:</b> _____ <b>Billing Address:</b> _____ _____ <b>City/State/Zip Code:</b> _____ <b>Phone:</b> _____ <b>Fax:</b> _____ <b>E-Mail:</b> _____	<b>Show Name:</b> _____ <b>Booth Name:</b> _____ <b>Booth #:</b> _____ <b>On-Site Contact:</b> _____ <b>Cell Phone:</b> _____ <b>Notes:</b> _____ _____
--	---

Selection	Quantity	Price	Date(s)	Start Time	End Time
<b>bartender(s)</b>		<b>\$150</b> <i>(per 4 hr shift)</i>			

**IMPORTED INFORMATION**

Centerplate is the exclusive caterer to the Baltimore Convention Center. All food, beverage and alcohol are to be served by Centerplate.  
 NO outside food or beverage is permitted, including logo'd bottled water and candies  
 100% payment is required at the time your order is placed. We accept American Express, MasterCard, Visa, Diner and Discover cards.  
 Each order is subject to a \$45.00 delivery fee per service, along with MD sales tax (6%; 9% alcohol) and a 21% service charge.  
 Prices are subject to change without notification.  
 Orders received within 7 days of the show will incur a late order fee of 20%.  
 Disposable service-ware is used for and/or provided for all booth catering orders and is a drop-off service only.  
 Client is responsible for all electrical requirements, as well as tables, linens, trash cans and trash removal in the booth.  
 For inquiries or to discuss additional options, please call (410) 649-7009  
 PLEASE FAX ORDER, ALONG WITH CREDIT CARD AUTHORIZATION FORM TO (410) 649-7043 or E-MAIL TO [marsha.pratt@centerplate.com](mailto:marsha.pratt@centerplate.com)



## credit card charge authorization

For your convenience in ordering additional services, please complete the information requested below and return the form with your order. Any balance owed to Centerplate will be charged to card upon completion of services.

Company Name:			
On-site Contact:			
Company Address City, State & Zip:			
Phone Number:		Fax Number:	
Event /Booth Name:		Date(s):	
Method of Payment circle one:	AMEX	VISA	MASTER CARD
Credit Card Number:	Expiration:		
Security Code Number:			

Authorized for additional on-sight services to be charged to card: YES \_\_\_\_\_ NO \_\_\_\_\_

**The Undersigned hereby authorizes all charges indicated above and as indicated on the executed contract and/or EVENT ORDER(S), for the referenced Function/Group to be guaranteed for payment to their Credit Card.**

#### CANCELLATION POLICY

Cancellation of any convention or individual event must be sent in writing to your Centerplate Sales Professional. Any cancellation received less than 15 days of the first scheduled event will result in a fee to Centerplate equal to 25% of the estimated food and beverage charges. Any cancellation received less than 7 days in advance of the first scheduled event will result in a fee of 50% of the estimated food and beverage charges. Any cancellation received after the Final Guarantee has been provided will result in a fee equal to 100% of the charges on the affected event order(s).

**Cardholder's Name:** \_\_\_\_\_  
(please print name)

**Cardholder's Signature:** \_\_\_\_\_  
(required for purchase)